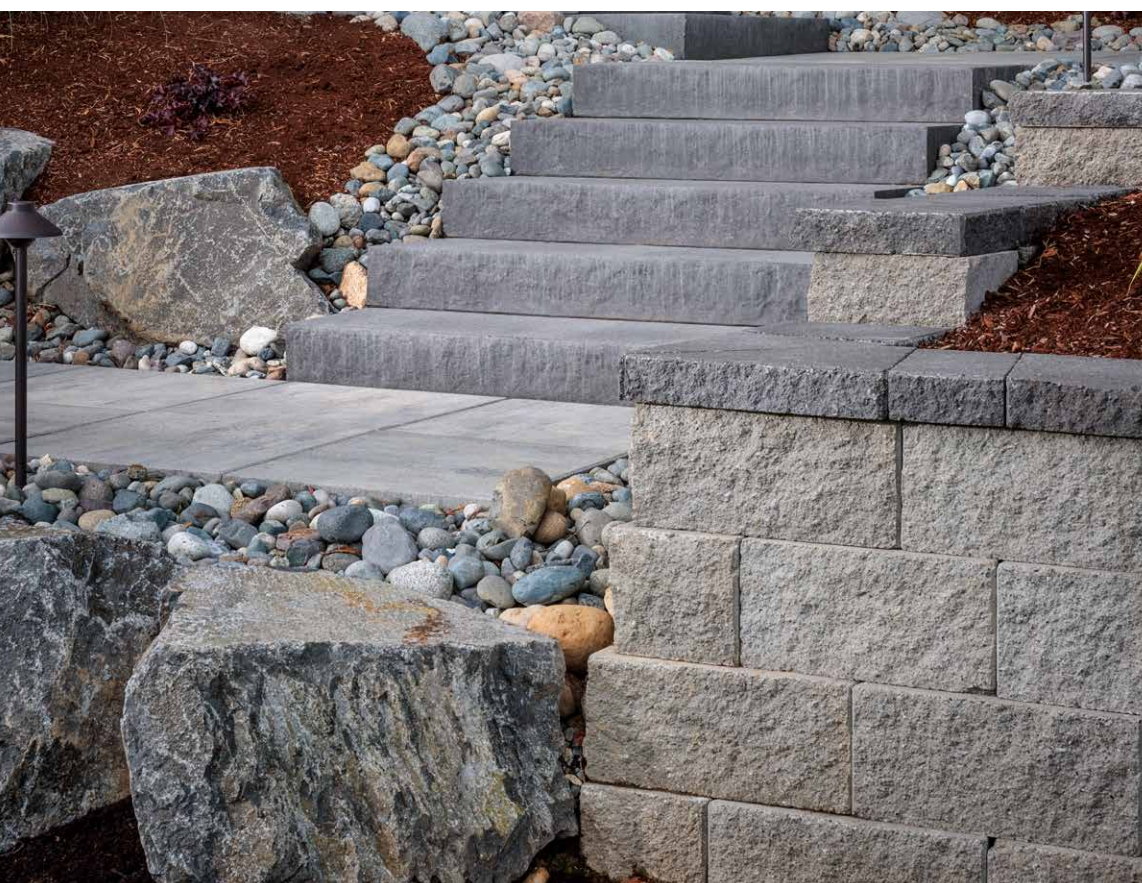


DIAMOND PRO[®] AIR

STRAIGHT FACE

AN INNOVATIVE SQUARE-FOOT BLOCK DESIGN THAT MAXIMIZES
INSTALLATION AND SHIPPING EFFICIENCIES





DIAMOND PRO[®] AIR

STRAIGHT FACE

AN INNOVATIVE SQUARE-FOOT BLOCK DESIGN THAT MAXIMIZES INSTALLATION AND SHIPPING EFFICIENCIES

☑ FEATURES & BENEFITS

- Can be installed as a gravity wall or geogrid-reinforced wall.
- Weighing only 54 lbs., this 1 square foot block maximizes installation and shipping efficiencies
- Front lug design produces a 9/16" per unit setback for a 4° system batter
- Cores align for easy filling
- Top course is placed upside down in order to increase capping efficiency
- Ideally situated for retaining walls up to 12 feet tall
- Can be used to build gravity walls up to 3' 4" high*, including the buried course
- Minimum outside radius, measured on the top course to the front of the units: 4 feet
- Minimum inside radius, measured on the base course to the front of the units: 6 feet

**Gravity wall heights are based on project specific conditions and may be lower than this value. Check with your local Belgard Representative for product availability and color options.*

🧱 SHAPES & SIZES

8 X 18



8" x 18" x 11.5"

CORNER



8" x 18" x 9"

CAP



4" x 18" x 12"

Check with your local Belgard Representative for product availability and color options.

BELGARD[®] | PAVES
THE WAY

For more info, visit [Belgard.com](https://www.belgard.com)

Oldcastle APG - A CRH Company
400 Perimeter Center Terrace, Ste. 1000
Atlanta, GA 30346
Ph: (678) 461-2838



© 2024 Oldcastle[®] APG, Inc., A CRH Company. All Rights Reserved.
Revised: 10/11/24 BEL24-412