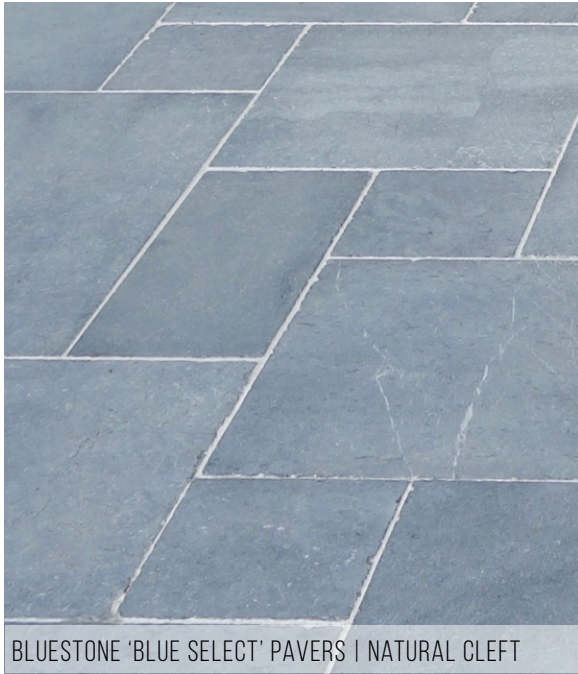


BLUESTONE



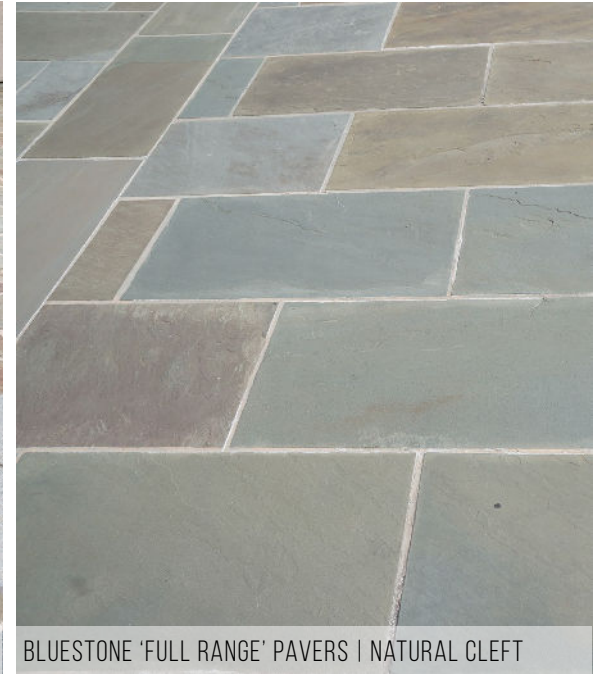
Peninsula Building Materials Co.



BLUESTONE 'BLUE SELECT' PAVERS | NATURAL CLEFT



BLUESTONE 'FULL RANGE' FLAGSTONE | NATURAL CLEFT



BLUESTONE 'FULL RANGE' PAVERS | NATURAL CLEFT

COLORS

FULL RANGE:

FULL RANGE OF COLORS INCLUDING RELAXED GREYS, BLUES, PLUMS, AND BROWNS

BLUE SELECT:

A MORE FORMAL, STATELY CHARACTER WITH A COOL BLUE/GREY COLOR

SURFACE TEXTURE

NATURAL CLEFT:

CREATED WHEN THE STONE IS SPLIT AT THE QUARRY PRODUCING NATURAL RIDGES WITH VARIATIONS ON THE SURFACE

FLAMED/THERMAL:

A TEXTURED, EVEN SURFACE ACHIEVED BY USING AN INTENSE FLAME ABUTTING A STONE'S WET SURFACE

STONE SHAPE

DIMENSIONAL:

CUT STONE, GENERALLY SQUARE & RECTANGULAR SHAPES

FLAGSTONE/IRREGULAR:

RANDOM, IRREGULAR SHAPE - NO DEFINED SIZE

INSTALLATION

CONCRETE:

USUALLY CAN SUPPORT VARIOUS THICKNESSES WITH NO MINIMUM

BASEROCK & SAND:

A MINIMUM THICKNESS OF 1.25" - 1.75" IS REQUIRED

NATURAL CLEFT BLUESTONE BLUE SELECT & FULL RANGE	3/4"-1.25" VARIABLE THICKNESS
FLAMED/THERMAL BLUESTONE BLUE SELECT & FULL RANGE	1" THICKNESS
FLAGSTONE - IRREGULAR BLUE SELECT & FULL RANGE	3/4"-1.5" VARIABLE THICKNESS
FLAGSTONE - IRREGULAR BLUE SELECT & FULL RANGE	1.5"-2.25" VARIABLE THICKNESS

STOCKED BLUESTONE PAVER SIZES

12"X12"

12"X18"

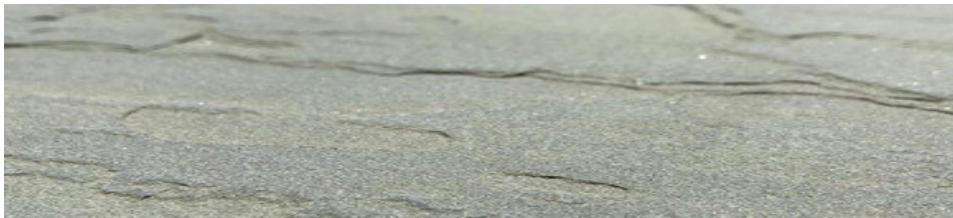
12"X24"

18"X18"

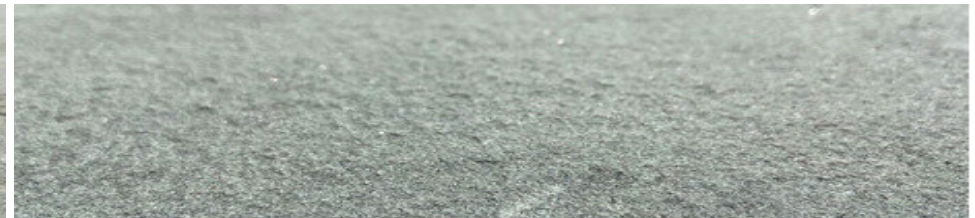
18"X24"

24"X24"

ADDITIONAL LARGE FORMAT SIZES SUCH AS 24"X36" & 18"X30" - CONTACT PBM YARD FOR AVAILABILITY



NATURAL CLEFT TEXTURE



FLAMED/THERMAL TEXTURE